



Sidney Road, Brixton, SW9

3 bedroom flat - purpose built for sale

£460,000

Leasehold

Property Details

A spacious and versatile three-bedroom apartment within a contemporary development, featuring a Juliette balcony, gardens, a children's playground, secure bicycle storage and full fibre broadband. The home centres around a bright open-plan reception room with large windows and a sleek contemporary kitchen with gloss cabinetry, integrated dishwasher and washer dryer, Quooker tap and illuminated worktops. The three bedrooms are well separated, providing privacy and flexibility. The principal bedroom includes soft carpeting, a useful additional area ideal as a dressing space, reading nook or home office, and a charming Juliette balcony. The two further bedrooms are both generous doubles with space for storage and desks. The flexible layout also allows one bedroom to become a second reception room, study or creative space. A family bathroom and separate WC add practicality, with potential to combine them subject to permission. Ideal for professionals, families or those seeking a low-maintenance community setting.

Features

- Three spacious bedrooms
- Juliette balcony
- Modern development
- Residents' lawn, playground and bike storage
- Over 725 square feet
- Versatile layout
- Central Brixton a three-minute stroll
- Clapham and Stockwell both walkable in ten-fifteen minutes
- Short walk to the Victoria and Northern Lines

Council tax band B EPC rating B (85)

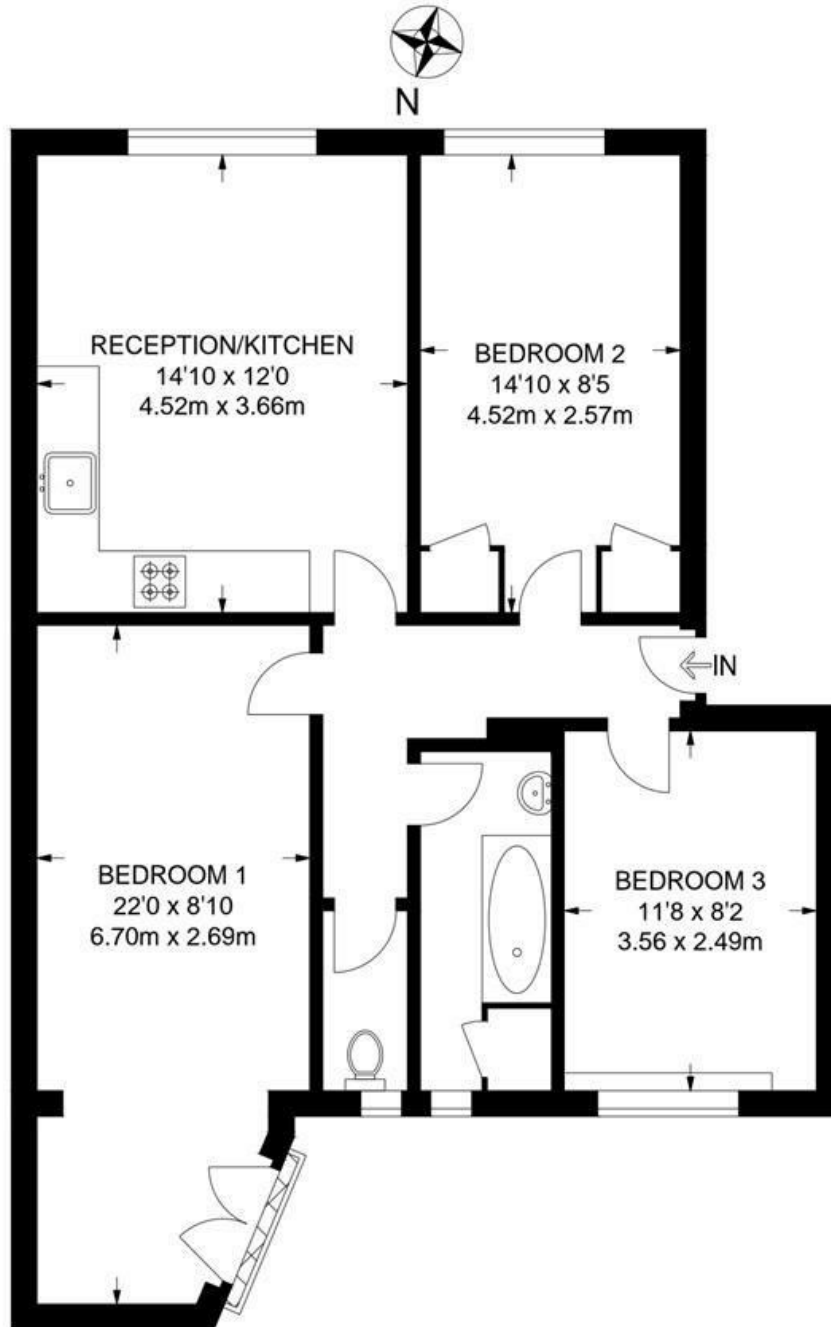




Sidney Road, Brixton, SW9

Sidney Road, SW9
3 Bedroom Flat

APPROXIMATE GROSS INTERNAL AREA: 729 SQ FT / 67.7 SQ M



FIRST FLOOR



While we try our very best, floor plans are produced as a guide only and we take no responsibility for the precise accuracy with which any property is represented.

Sidney Road, Brixton, SW9

